

Suppressing the Catalytic Barriers in Cu_2O Electrocatalyst via Cu Electron Transport Interlayer for Enhanced CO_2 Reduction Efficiency

Jiwon Heo¹ | Chaewon Seong¹ | Hyojung Bae⁴ | Vishal Burungale² | Pratik Mane²
Soon Hyung Kang^{2,3*} | Jun-Seok Ha^{1,2*}

¹School of Chemical Engineering,
Chonnam National University,
Gwangju 61186, Korea

²Optoelectronics Convergence
Research Center, Chonnam National
University, Yongbong-ro 77,
Gwangju, Republic of Korea

³Department of Chemistry Education,
Chonnam National University,
Gwangju 61186, Republic of Korea

⁴Korea Photonics Technology Insti-
tute, Cheomdanventure-ro 124,
Gwangju, Republic of Korea

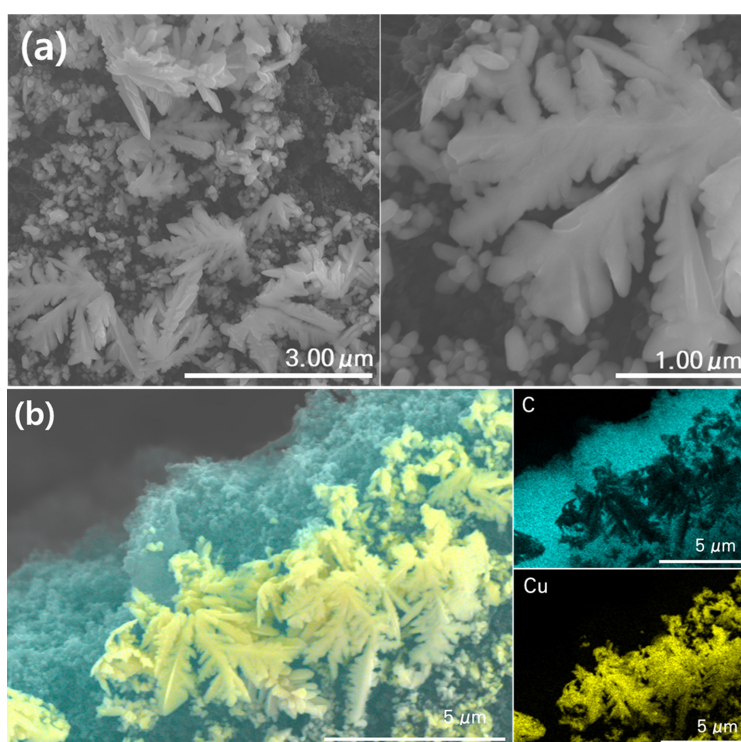


Fig. S1. (a) FE-SEM images and (b) EDS mapping results showing the distribution of elements (C, Cu) of the GDE@Cu surface.

CORRESPONDENCE

T: +82-62-530-2497

E: skang@jnu.ac.kr (S.-H. Kang)

jsha@jnu.ac.kr (J.-S. Ha)

<https://doi.org/10.33961/jecst.2024.01137>

VOLUME 16 ISSUE 2 MAY 2025

Table S1. Solution resistance and charge transfer resistance of GDE@ Cu_2O and GDE@Cu@ Cu_2O electrodes calculated from Nyquist plot

	R_s	R_{ct}
GDE@ Cu_2O	27.43	1.503E5
GDE@Cu@ Cu_2O	20.4	7.565E4



OPEN ACCESS

This is an open-access article distributed under the terms of the Creative Commons Attribution Non-Commercial License (<http://creativecommons.org/licenses/by-nc/4.0>) which permits unrestricted non-commercial use, distribution, and reproduction in any medium, provided the original work is properly cited.